

COMPANY PROFILE



Hi-Force Engineering Works

CONSTRUCTION SOLUTIONS





HEALTH, SAFETY AND ENVIRONMENT POLICY



Engineering Works Policy is to strive for excellence In all its activities including health, safety and environmental Matters.



Is committed to give priority to health safety and Environment Wherever Hi-force operates and shall Endeavour to take every Reasonable and practicable step to prevent and eliminate the risk of injuries Health hazards and damage to properties. Hi-force shall also Take proactive. Step towards the conservation and preservation of the environment.



To achieve these objectives, Hi-force shall ensure that the facilities it designs, Builds and operates and the services it provides are in according appropriate Legal requirement, industry standards and best practices



ارتدى الحذاء
الواقى



Shall provide the necessary resources, organization, system and Training and shall communicate with employees, contractors Customer, suppliers and the public with regards, to appropriate matters on health safety and environment



Expects all its employees and sub - contractors to strictly adhere to all time



ارتدى الخوذة
الواقية

Loay Mohammed Ali Altaieb
General Manager
Hi-force Engineering Works



Hi - Force Engineering Works

Hi-Force Engineering

is an experienced contractor specialized in oil field , water treatment, and mining, construction works with highly collaborative approach and dedicated team of employee- Owners who are experts at driving projects forward at the right pace. We maintain the highest quality and safety standards, and focus on seamlessly integrating construction and plant operations to deliver projects on schedule and within budget.

Mission

Hi-Force highly values our clients' needs for safe, reliable, and operationally efficient designs through cost-effective engineering and construction management services in a responsive, dynamic, and efficient way. Our Principals have built their careers understanding this truth and developed confidence and trust, long-lasting relationships within the industry by conducting our business with integrity, honesty, and hard work.

Our Mission Statement:

To provide responsive, safe, and trusted solutions to our clients with the highest-quality, most dependable, cost-effective engineering, design and construction management services in the energy industry.

Vision

Our vision for **Hi-Force** embodies who we are, individually and as a company, and reflects our core values and the path we follow in pursuit of providing our clients with unmatched performance, unparalleled accountability, and the highest-level of satisfaction in the industry.

Our Vision for Hi-Force:

To build trusted relationships and serve our clients through integrity, honesty, hard work and accountability in a collaborative, solution-oriented environment focused on providing the right solution instead of the easy solution, in the most efficient and cost-effective way possible.

Values

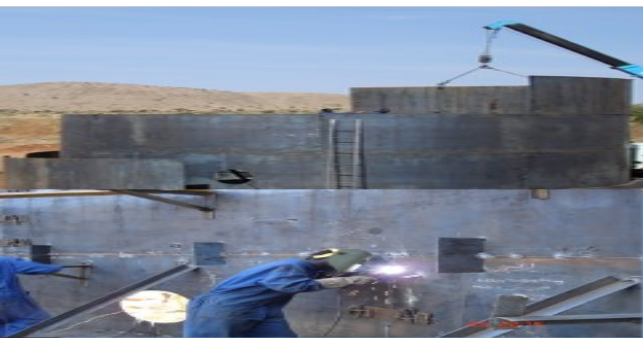
- Integrity
- Accountability
- Reliability
- Efficiency
- Quality
- Safety
- Innovation
- Collaboration
- Customizable Solutions



Hi-Force is specialized in electro-mechanical works and civil works, construction, contracting, design, supplying, and erection of petroleum and process plant. Hi-force owned work shop for steel works at Gabra new industrial city with storehouse and trusses with 2,000 sq. m, the work shop is well equipped with M/C and special tools with main office.



Charطوم - Sudan - جابرة - Industrial Area - Tel - + 249 18 3088701 / + 249 18 5883380
Fax - + 24918 5778800 Mob - 249 912319008 E-Mail: hiay@hi-force.net



Hi-Force



Specialization of Hi-Force.

- Atmospheric tanks (U.G. H, A.G.H/V), design and construction according to API 650 and BS 2654.AWWA100 Requirements.
- Fire fighting System, design, supplying, and construction according to NFPA requirements.
- Tanks foundation, design, construction, and supplying.
- Petroleum and water pumps selection, installation and supplying, according to API 620 requirements.
- Piping system, supplying, installation and connections, according to API 610 requirements.
- Service station canopies complete with fecia and finishing.
- Fully automation system for petroleum facilities and process plants instrumentation, connections, and supplying.
- Calibration of all type of bulk meter, fuels / water tank, and dispenser with computer soft ware.
- Hi – Force also specialized in repair and maintenance of bulk meters, centrifugal pumps, dispensing pumps, and piping system.





Loading & Off Loading Rack



Khartoum - Sudan Jabra - Industrial Area - Tel : + 249 15 3999791 / + 249 15 5883360
Fax : + 24915 5779800 Mob: + 249 912315008 E-Mail: loay@hiforce.net



Hi-Force Engineering Works



Hi - Force supply, fabricate, and weld carbon steel, stainless steel, with Radiographic tests as per ASTM and API standards.





Name	Occupation	Qualification	Experiences
Loay M.Ali	General Manager	Bsc from U.of k. WCP Issuing Author. Training Courses in Europe.	Mobil Oil Electro mech. Project Mgr. Petronas, Electro mech. Project Mgr. Hi-Force G.M.
Adil Mamoun	Projects Mgr.	Bsc.U.of. K.	Hegheig Oil Company. Projects Supervisor. Hi-Force Project Mgr
Abobaker Abdalla	Civil Works Project Mgr.	Bsc.U.of. K.	Hi-Force Civil Works. Project Mgr.
Ahmed Ali Albashir	Business Development Mgr.	Bsc.U.of. K.	Hi-Force Business Development Mgr.
Khalid Adam Mohd	Production Super visor.	Bsc Sudan University	Depot & Fact.Shop Mgr. Hi-Force Shop Mgr.
Nabila Mutasim	Accountant.	Bsc .Ahlia Unv.	Hi-Force accountant.
Salma sedeeg	Projects Finance Controller.	Bsc Sudan University	Hi-Force.
Afraa Abdalbaset	General Secretary.	Diploma In Secretary.	Hi-Force.
Yosif Alnour	Work shop Supervisor.	Diploma in Manufacturing.	Dep & Tac. Hi-Force.



Assets Data Sheet.

Date: Jan. 2009

<i>N.</i>	<i>Asset Description</i>	<i>QTY</i>
1	Work shop with office 2,500 Sq. meters	1
2	Crane 25 tons Kato.	1
3	Heavy truck Iveco 60 tons for transportation	2
4	Heavy truck 15 tons (Mitsubishi)	2
5	Forklift 2.5 tons.	1
6	Forklift 5 tons	1
7	Hydraulic shear machines 3.2mx6mm	1
8	Hydraulic press brake machine (8mm.)	1
9	Plasma Cutting M/C.	2
10	Electric al welding machine (DC & A.C.) (400 Amp.)	28
11	Diesel Welding machine (Dutite 500 Amp D.C)	8
12	Heavy duty generator 200 KVA.	1
13	Heavy duty Genset 100 KVA	2
14	GENSET 50 KVA.	4
15	Diesel sand blasting compressor 300 cu. m	1
16	Airless painting machine	1
17	Punching machine up to 50mm	2
18	Paint thickness detector	1
19	Hydrostatic test multi stage pumps	2
20	Complete vertical tanks tool for 20 tanks at time	20 tanks
21	Corrosion thickness detector	2
22	Trac - excavator for excavation and civil works	1





2003

Construction of GNOPC refueling Facilities at Alhod and Um-siala. Pump station

PETRONAS marketing Sudan deluge valves installation at PETRONAS Gaili terminal

Fine hygonic factory, fire fighting system and installation of all of equipment .

2004

EPC .project for PETRONAS Nyala aviation depot.

EPC. Project for PETRONAS Alfasher aviation depot .

EPC . project for PETRONAS Aljeneina aviation

Depot.

2005

Procurement and construction of PETRONAS Aviation depot in juba.

UNMIS fuel facility in Rumek for tristar.

UNMIS fuel facility in Maridi for tristar

Obied Aviation depot for Petronas at Obied Airport.





Force Engineering Works



2006	UNMIS fuel facility in Alobied for Tristar.
	UNMIS fuel facility in ABYIE for Tristar Co.
	Silo, and concrete plant for ARAB CONTRACORS COMPANY, with manufacturing of bridge piles for Shandi Almatama bridge
2007	UNMIS fuel facility in Port Sudan for Tristar.
	Petronas 14 service station canopies in capital and up country with different sizes
	Assalayia sugar factory steam turbine water treatment plant
2008	Assalayia Sugar Factory water treatment plant for areas domestic uses.
	Nile Bakri Petroleum Co. Alfasher Aviation depot.
	Amonia Petroleum Co. Alobied depot.
2009	UNAMID Fuel terminal in UN hybrid camps in Algeneina.
	ALRAJHI fuel Depot in Barbar (under construction.)



Complete service station backage



COMPLETE PACKAGE FOR AUTOMOTIVE SERVICE STATION

hi - force designed, supplied and constructed 14 steel canopies for Petronas marketing Sudan in capital and up contry, complete with civil works



our factory in Gubra industrial area is well equipped with Plasm cutting, Automatic welding, and hydraulic machines for press brake, bending, and sheef

We are ready to supply steel canopies per sq. meter any where complete with buildings , UG. tanks, and dispenser.





Hi - Force owned steel factory in Gubra industrial area 2,500 sq.m, well equipped with machines and tools for prefabrication works. in order to perform high accuracy, we built our main office inside the work shop.

we have specilized engineers for design, fabrication and construction.

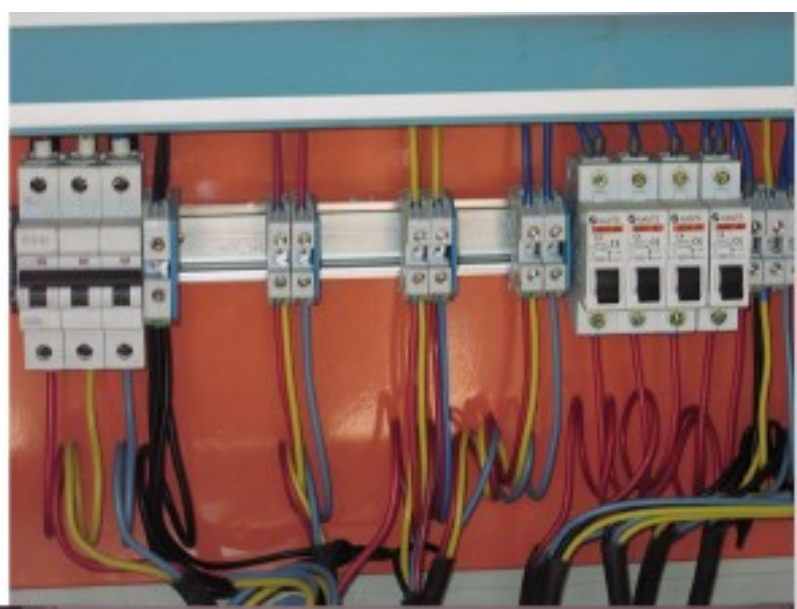




Hi - Force ready to supply, fabricate, and install all type of fire fighting system for depots, buildings and industries with foam system, cooling system dry and wet as per NFPA standards.



Hi - Force is specialized also in Electrical works, supply, design and install, complete with earthing system.





Hi-Force Engineering Works



Welder Qualification Certificate

Welder Name: Mohammed El Tayeb

Stamp No: -16-F007

WPS No: WPS-001

Welding Process: SMAW

Manual/Semi-auto: Manual

Base Metal: ASTM A36 & A106

Reference Standards: API 1104-2003/AWS D1.1 and OWNER'S Specification

Test Date: 27.10.2008

Welding Variable and Range Qualified

WELDING VARIABLE	TEST CONDITION	RANGE QUALIFIED
Joint Design	Single V Butt Joint	Single V Butt joint
Base Metal (Plate or Pipe)	ASTMA36 & A106	ASTM A36 & A106
Diameter /Thickness	Pipe 6" sch 40 /Plate 8 mm THK	pipe 6" sch 40 /Plate 8 mm THK
Filler Metal Specification No	AWS A5.1 & E6013	AWS A5.1 & E6013
Filler Metal	Group 1 for Root Pass, Group 8 for Fill and Cap Pass	Group 1 for Root Pass, Group 8 for Fill and Cap Pass
Filler Metal Distribution	SMAW Root E6013 SMAW Fill and Cap E6013	SMAW Root E6013 SMAW Fill and Cap E6013
Trade Name	Afrox South Africa	Afrox South Africa
Position	2G, 3G, 6G	2G, 3G, 6G
Direction of Welding	Uphill root, fill and cap	Uphill root, fill and cap
Time Between Passes	Maximum 5 Min	Maximum 5 Min
Electrical Characteristic	AC	AC

Visual Inspection (Accept / Reject) : Accept

Radiographic Inspection (Accept / Reject) : Accept

Reference To : RT-003 REPORT

Qualification Recored by _____

This is to certify that the report is correct and tests are performed on the specimens which are prepared and welded in accordance with API 1104 / ASME B314 Requirement of specification and code.

CONTRACTOR /BAG ENGINEER	OWNER REPRESENTATIVE
NAME: <u>Adil Mamoun</u>	NAME: <u>Hisham I. Samir</u>
SIGNATURE:	SIGNATURE:
DATE: <u>27.10.08</u>	DATE: <u>05/10/08</u>



As per API, and WPS, we have qualified welders with welding cards, we build the welding procedure which is approved by the client.

we have tests for weldings and material from U. Of. K, and S.A.E.C

WELDER QUALIFICATION CARD

Welder's Name: **Abd Allah Daidom Ismail**
 License No: 46-000
 Working Process: SMAW Type: Manual
 WPS No: WPS-001 No. 1 2G, 3G, 6G
 Base & Thickness (Actual): SMAW (A36, A106)
 Range Qualified: 6" sch 40 / Plate 8 mm THK
 Test Position: 2G, 3G, 6G Position: 2G/3G/6G
 Electrode Class: E6013 1 No. 2
 Joint Type: Single V Butt Test Method: Radiography
 Testing Date: 27.10.2008 Exp. Date: 27.10.2009 Recd. From: SA1

This card is to certify the welder for 6 months from the date of issue. Beyond this date, welding records must be consulted to ensure the welder's qualification has been maintained.

Hi-Force Engineering Works

This is to certify that this person has been qualified in accordance with the requirements of these standards of ASME B31.4

Welding Inspector (SA1)
 Customized Application

WELDER QUALIFICATION CARD

Welder's Name: **Pader Minan**
 License No: 46-000
 Working Process: SMAW Type: Manual
 WPS No: WPS-001 No. 1 2G, 3G, 6G
 Base & Thickness (Actual): SMAW (A36, A106)
 Range Qualified: 6" sch 40 / Plate 8 mm THK
 Test Position: 2G, 3G, 6G Position: 2G/3G/6G
 Electrode Class: E6013 1 No. 2
 Joint Type: Single V Butt Test Method: Radiography
 Testing Date: 27.10.2008 Exp. Date: 27.10.2009 Recd. From: SA1

This card is to certify the welder for 6 months from the date of issue. Beyond this date, welding records must be consulted to ensure the welder's qualification has been maintained.

Hi-Force Engineering Works

This is to certify that this person has been qualified in accordance with the requirements of these standards of ASME B31.4

Welding Inspector (SA1)
 Customized Application

WELDER QUALIFICATION CARD

Welder's Name: **Mohammed El Tayeb**
 License No: 46-000
 Working Process: SMAW Type: Manual
 WPS No: WPS-001 No. 1 2G, 3G, 6G
 Base & Thickness (Actual): SMAW (A36, A106)
 Range Qualified: 6" sch 40 / Plate 8 mm THK
 Test Position: 2G, 3G, 6G Position: 2G/3G/6G
 Electrode Class: E6013 1 No. 2
 Joint Type: Single V Butt Test Method: Radiography
 Testing Date: 27.10.2008 Exp. Date: 27.10.2009 Recd. From: SA1

This card is to certify the welder for 6 months from the date of issue. Beyond this date, welding records must be consulted to ensure the welder's qualification has been maintained.

Hi-Force Engineering Works

This is to certify that this person has been qualified in accordance with the requirements of these standards of ASME B31.4

Welding Inspector (SA1)
 Customized Application

WELDER QUALIFICATION CARD

Welder's Name: **Alyas Suleiman Habiba**
 License No: 46-000
 Working Process: SMAW Type: Manual
 WPS No: WPS-001 No. 1 2G, 3G, 6G
 Base & Thickness (Actual): SMAW (A36, A106)
 Range Qualified: 6" sch 40 / Plate 8 mm THK
 Test Position: 2G, 3G, 6G Position: 2G/3G/6G
 Electrode Class: E6013 1 No. 2
 Joint Type: Single V Butt Test Method: Radiography
 Testing Date: 27.10.2008 Exp. Date: 27.10.2009 Recd. From: SA1

This card is to certify the welder for 6 months from the date of issue. Beyond this date, welding records must be consulted to ensure the welder's qualification has been maintained.

Hi-Force Engineering Works

This is to certify that this person has been qualified in accordance with the requirements of these standards of ASME B31.4

Welding Inspector (SA1)
 Customized Application

WELDER QUALIFICATION CARD

Welder's Name: **Rahma Osman Code**
 License No: 46-000
 Working Process: SMAW Type: Manual
 WPS No: WPS-001 No. 1 2G, 3G, 6G
 Base & Thickness (Actual): SMAW (A36, A106)
 Range Qualified: 6" sch 40 / Plate 8 mm THK
 Test Position: 2G, 3G, 6G Position: 2G/3G/6G
 Electrode Class: E6013 1 No. 2
 Joint Type: Single V Butt Test Method: Radiography
 Testing Date: 27.10.2008 Exp. Date: 27.10.2009 Recd. From: SA1

This card is to certify the welder for 6 months from the date of issue. Beyond this date, welding records must be consulted to ensure the welder's qualification has been maintained.

Hi-Force Engineering Works

This is to certify that this person has been qualified in accordance with the requirements of these standards of ASME B31.4

Welding Inspector (SA1)
 Customized Application

WELDER QUALIFICATION CARD

Welder's Name: **Vibes Ovan Danka**
 License No: 46-000
 Working Process: SMAW Type: Manual
 WPS No: WPS-001 No. 1 2G, 3G, 6G
 Base & Thickness (Actual): SMAW (A36, A106)
 Range Qualified: 6" sch 40 / Plate 8 mm THK
 Test Position: 2G, 3G, 6G Position: 2G/3G/6G
 Electrode Class: E6013 1 No. 2
 Joint Type: Single V Butt Test Method: Radiography
 Testing Date: 27.10.2008 Exp. Date: 27.10.2009 Recd. From: SA1

This card is to certify the welder for 6 months from the date of issue. Beyond this date, welding records must be consulted to ensure the welder's qualification has been maintained.

Hi-Force Engineering Works

This is to certify that this person has been qualified in accordance with the requirements of these standards of ASME B31.4

Welding Inspector (SA1)
 Customized Application

WELDER QUALIFICATION CARD

Welder's Name: **Lucka Loik George**
 License No: 46-000
 Working Process: SMAW Type: Manual
 WPS No: WPS-001 No. 1 2G, 3G, 6G
 Base & Thickness (Actual): SMAW (A36, A106)
 Range Qualified: 6" sch 40 / Plate 8 mm THK
 Test Position: 2G, 3G, 6G Position: 2G/3G/6G
 Electrode Class: E6013 1 No. 2
 Joint Type: Single V Butt Test Method: Radiography
 Testing Date: 27.10.2008 Exp. Date: 27.10.2009 Recd. From: SA1

This card is to certify the welder for 6 months from the date of issue. Beyond this date, welding records must be consulted to ensure the welder's qualification has been maintained.

Hi-Force Engineering Works

This is to certify that this person has been qualified in accordance with the requirements of these standards of ASME B31.4

Welding Inspector (SA1)
 Customized Application

WELDER QUALIFICATION CARD

Welder's Name: **Joseph Al Fawad**
 License No: 46-000
 Working Process: SMAW Type: Manual
 WPS No: WPS-001 No. 1 2G, 3G, 6G
 Base & Thickness (Actual): SMAW (A36, A106)
 Range Qualified: 6" sch 40 / Plate 8 mm THK
 Test Position: 2G, 3G, 6G Position: 2G/3G/6G
 Electrode Class: E6013 1 No. 2
 Joint Type: Single V Butt Test Method: Radiography
 Testing Date: 27.10.2008 Exp. Date: 27.10.2009 Recd. From: SA1

This card is to certify the welder for 6 months from the date of issue. Beyond this date, welding records must be consulted to ensure the welder's qualification has been maintained.

Hi-Force Engineering Works

This is to certify that this person has been qualified in accordance with the requirements of these standards of ASME B31.4

Welding Inspector (SA1)
 Customized Application



Civil works is one of our main activities as per standards of oil and industrial fields.

we executed complete civil works from excavations, backfilling, and concrete works with CBR, and Cubes tests.





Main Building UNAMID Fuel Depot



Earthing Collection Manhole



Under ground Tank R.C cover



, Khartoum - Sudan Jabbra - Industrial Area - Tel : + 249 15 3989791 /+ 249 15 5883380
Fax : +24915 5779800 Mob: +249 912315006 E-Mail: loay@hiforce.net



WATER TREATMENT PROJECTS



Hi - Force Engineering Works

WWW.HI-FORCE.TECH

Our water treatment construction experience includes:

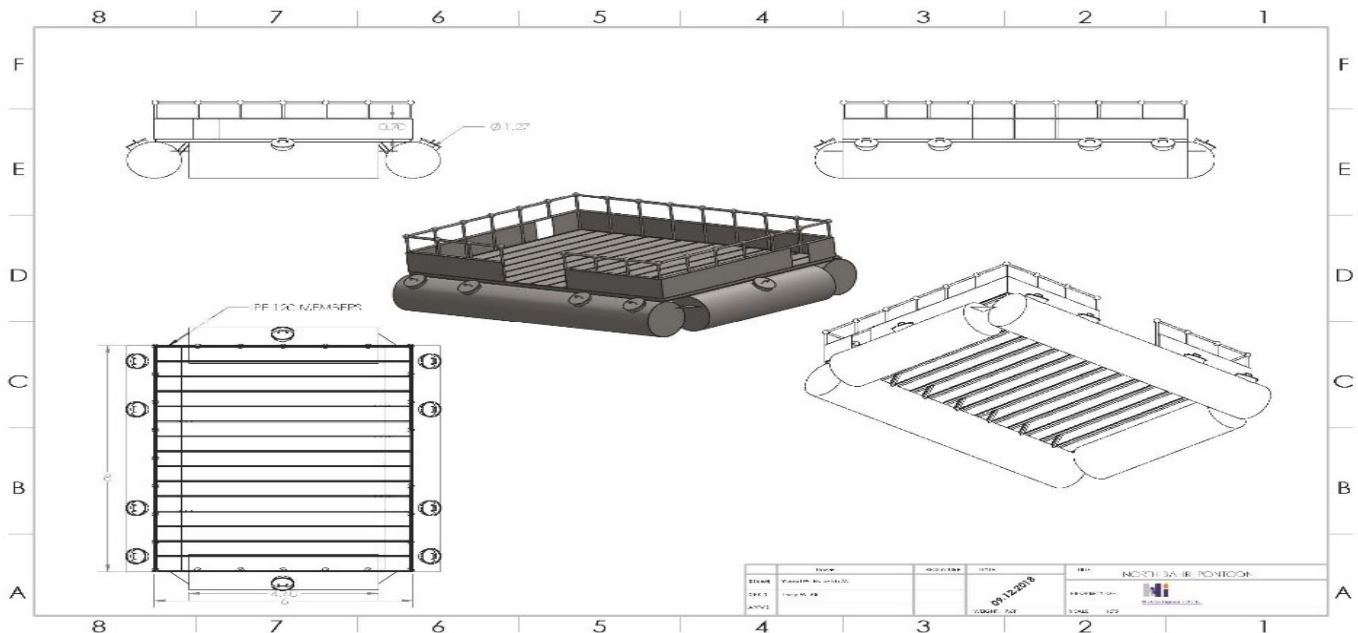
❖ Water Intake Systems

Our technical capability scale at [Hi-Force](#), fits the manufacturing of all the types of Water Intake platforms. Either it was floating platforms (Pontoons) or fixed; Hi-Force meets all the standards for its fabrication.

We are specialized in manufacturing the following types of platforms:

1. Floating Platforms (Pontoon):

[Hi-Force](#) is deemed a proficient manufacturer for pumps floating platforms, considering all design and fabrication standards. Both Flat Top Pontoons and Float Bottom Pontoons are manufactured with options of different sizes and loads to carry.



Why Pontoons from [Hi-Force](#)?

- In-house Design Facilities with Latest Software.
- Qualified Design Teams with Proven Design Record
- Customization & Integration for Different Applications
- Manufacturing Facilities with Standard & Testing
- Strong Service Teams for Installation and Commissioning

Fixed Platforms:

At [Hi-Force](#) we spare no efforts to introduce holistic solutions to water intake systems represented in the efficient fixed platforms, which are shallow-water rigs that can be physically attached to the sea floor. Our Fixed Platforms include elevated pumps platforms to help in acclimatize with the variation in sea water levels. They stand on legs of steel that is piled into the sea floor, they are stable and resilient to wind and water movements and function safely for at least 25 years!

Filtration

Hi-Force's scope include the design and manufacturing of Sand Filters including Rapid Gravity Sand Filters and Pressure Ones. Our Gravity sand filters comes with all its accessories including flocculation chemicals, granular gravels, piping...etc. As well as pressure filters which include pressure vessels, Pumps, Air Purges, back wash systems, valves and piping.

i. Rapid (gravity) sand filters

ii. Fixed Platforms:

iii. At **Hi-Force** we spare no efforts to introduce holistic solutions to water intake systems represented in the efficient fixed platforms, which are shallow-water rigs that can be physically attached to the sea floor. Our Fixed Platforms include elevated pumps platforms to help in acclimatize with the variation in sea water levels. They stand on legs of steel that is piled into the sea floor, they are stable and resilient to wind and water movements and function safely for at least 25 years!

iv. Filtration

v. **Hi-Force's** scope include the design and manufacturing of Sand Filters including Rapid Gravity Sand Filters and Pressure Ones. Our Gravity sand filters comes with all its accessories including flocculation chemicals, granular gravels, piping...etc. As well as pressure filters which include pressure vessels, Pumps, Air Purges, back wash systems, valves and piping.

vi.



Gravity Sand Filter

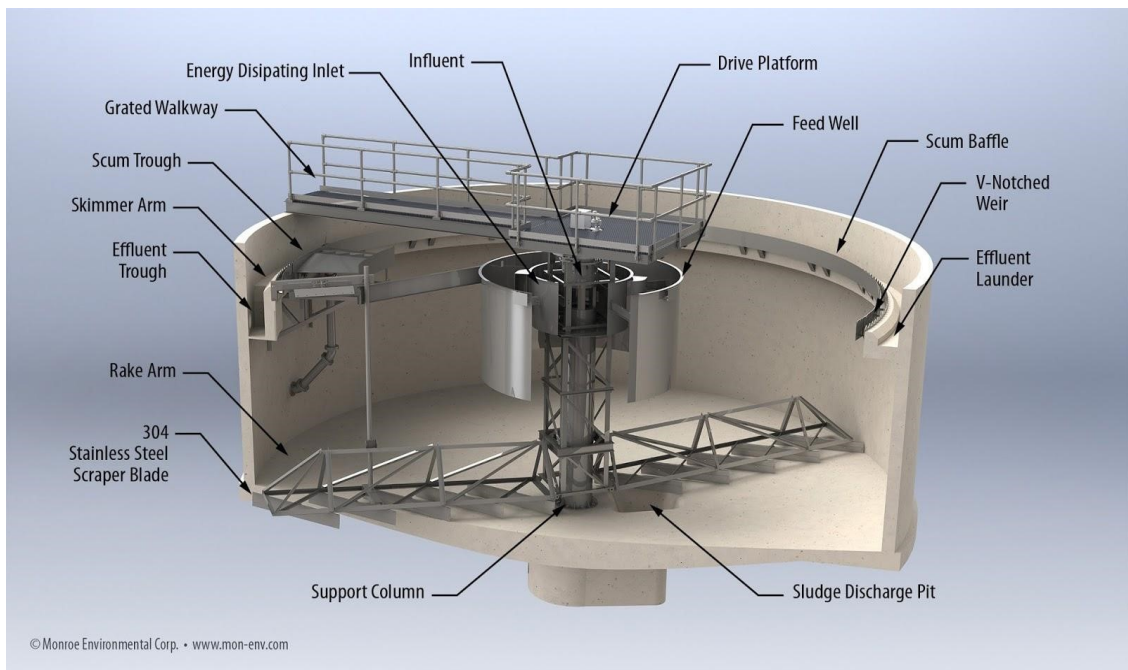
vii. Pressure Filters



Sedimentation tank, pressure filter, storage tank at Asalaya Sugar CO. Water Treatment



viii. Sedimentation Tanks



Sedimentaion tank

❖ **Bridges:**

Hi-Force has a long history in design and construction of bridges and gangways for water intake platforms. Custom types of bridges structures can be designed with accordance to the applications necessities and the loads which is carried.





Assembling Parts



Final Stage at Jabal Awlya Site

High Lift Pumps Stations

Are facilities including [pumps](#) and equipment for pumping fluids from one place to another.

And in Hi-Force we have the ability to manufacture and install the whole pump station with all equipment and fittings in the most efficient and cost-effective way.

I. Pumps house structure



- **HIGH LIFT PUMPS STATIONS**

- ARE FACILITIES INCLUDING [PUMPS](#) AND EQUIPMENT FOR PUMPING FLUIDS FROM ONE PLACE TO ANOTHER.

- AND IN HI-FORCE WE HAVE THE ABILITY TO MANUFACTURE AND INSTALL THE WHOLE PUMP STATION WITH ALL EQUIPMENT AND FITTINGS IN THE MOST EFFICIENT AND COST-EFFECTIVE WAY.

-

STEEL AND HDPE PIPING WORK

STEEL AND HDPE PIPING WORKS STARTING FROM DESIGN, SUPPLY, MOBILIZATION, EXCAVATION, AND WELDING, COMPLETE WITH HYDROSTATIC TESTS AND RELATED FITTINGS.





Our main clients in Sudan.

Khartoum State Water Corporation(KSWC.)

Khartoum State Sanitary Corporation(KSSC.)

UNAMID.

UNDP.

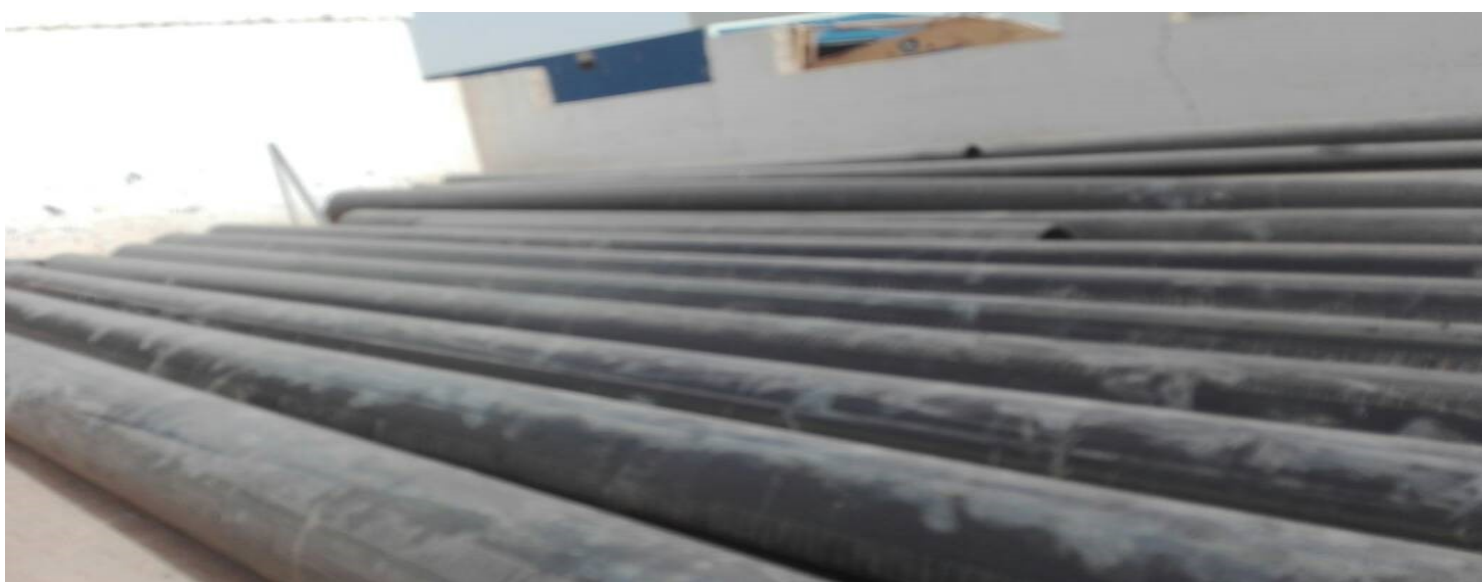
Rida & Aburugia Engineering Company.

Sahara Mining Factories.

Wd-albottana Mining

Sudanese Sugar Factories { Assalayia, halfa, and sinnar }





Plant Equipment for Steel and HDPE Pipeline

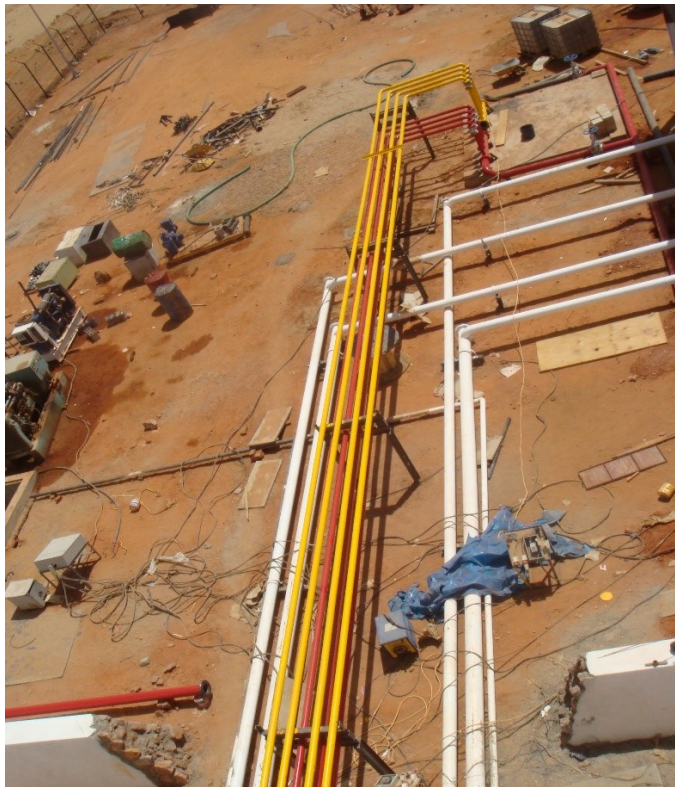


Assets Data Sheet.

Date: Jan. 2009

N.	Asset Description	QTY
1	Work shop with office 2,500 Sq. meters	1
2	Crane 25 tons Kato.	1
3	Heavy truck Iveco 60 tons for transportation	2
4	Heavy truck 15 tons (Mitsubishi)	2
5	Forklift 2.5 tons.	1
6	Forklift 3 tons	1
7	Hydraulic shear machines 3.2mx6mm	1
8	Hydraulic press brake machine (5mm)	1
9	Plasma Cutting M/C.	2
10	Electric al welding machine (DC & A.C) (400 Amp)	28
11	Diesel Welding machine (Dutite 300 Amp D.C)	8
12	Heavy duty generator 200 KVA	1
13	Heavy duty Genset 100 KVA	2
14	GENSET 50 KVA	4
15	Diesel sand blasting compressor 300 cu.m	1
16	Airless painting machine	1
17	Painting machine up to 50mm	2
18	Paint thickness detector	1
19	Hydrostatic test multi stage pumps	2
20	Complete vertical tanks 100 for 20 tanks at time	tanks
21	Corrosion thickness detector	2
22	Dok - excavator for excavation and civil works	1







Clients:

Our commitment to excellence makes us a trusted partner; our clients can rely on time and time again.



UNAMID



MINING PROJECTS



Hi - Force Engineering Works

WWW.HI-FORCE.TECH



Hi- Force is specialized in construction and design of mining factories with different sizes with supply of materials and equipment required like leaching Tanks, thickeners , ball mills, compressors, piping, and cyclones complete with civil and electrical works





Our main clients in mining construction field

- Sahara Mining CO.
- Abo Rugaia Mining Co.
- Ridaa Mining Co.
- El-Itemaad group Mining Co.
- Wd-albottana Mining.

